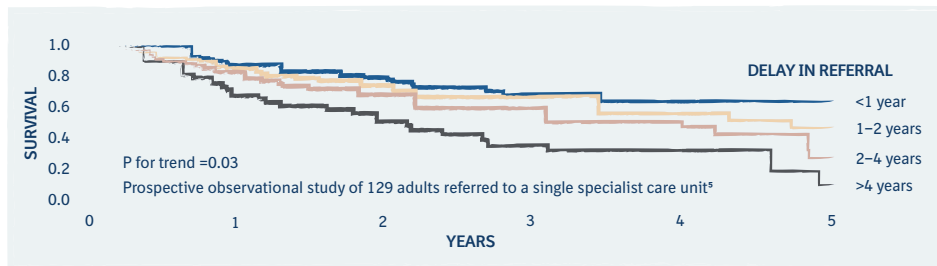
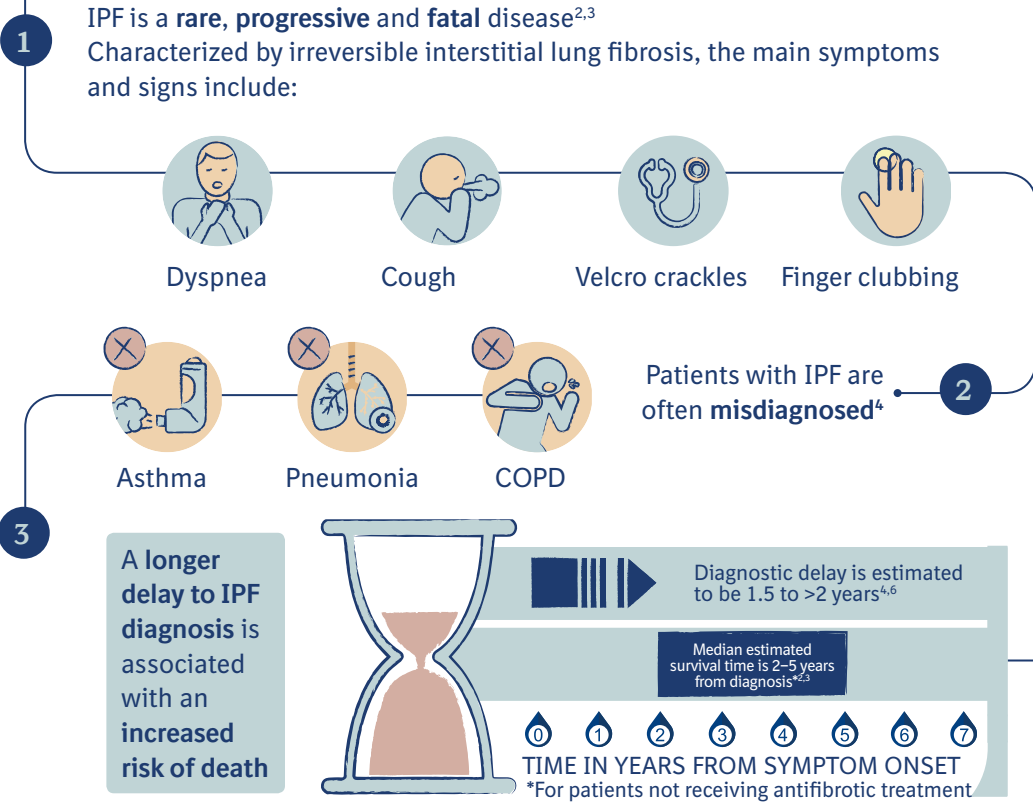
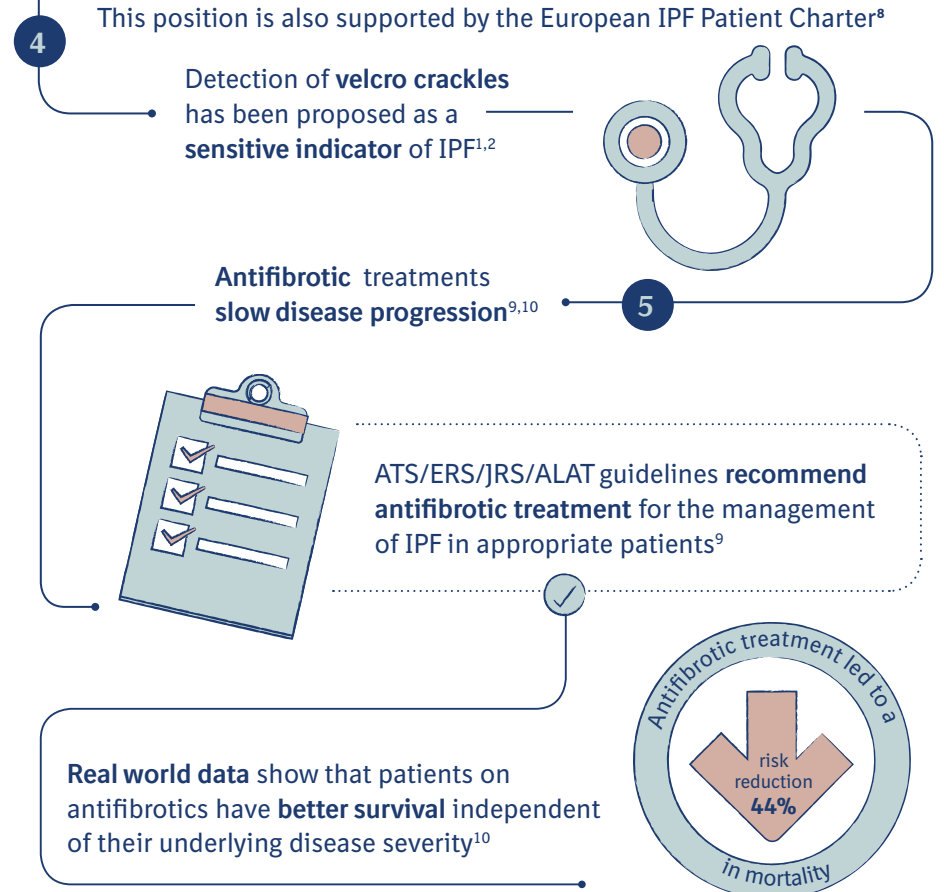


Importance of early diagnosis and treatment in idiopathic pulmonary fibrosis (IPF)¹



Reprinted with permission of the American Thoracic Society. Copyright © 2018 American Thoracic Society. Lamas DJ et al. 2011 Delayed Access and Survival in Idiopathic Pulmonary Fibrosis: A Cohort Study. Am J Respir Crit Care Med 184:842–847. The American Journal of Respiratory and Critical Care Medicine is an official journal of the American Thoracic Society.

Early and accurate detection and intervention is crucial as evidence suggests it can improve outcomes in IPF^{1,7}



Greater benefits are achieved with early interventions in patients with IPF and prompt referral to specialist centers is essential¹

ATS/ERS/JRS/ALAT: American Thoracic Society/European Respiratory Society/Japanese Respiratory Society/ Latin American Thoracic Association
 1. Molina-Molina M et al. Exp Rev Res Med 2018;12:537–539; 2. Raghu G et al. Am J Respir Crit Care Med 2011;183:788–824; 3. National Clinical Guideline Centre (UK). Diagnosis and management of suspected idiopathic pulmonary fibrosis: idiopathic pulmonary fibrosis. London: Royal College of Physicians (UK) 2013; 4. Schoenheit G et al. Chron Respir Dis 2011;8:225–231; 5. Lamas D et al. Am J Respir Crit Care Med 2011;184:842–847; 6. Cosgrove G et al. BMC Pulm Med 2018;18:9; 7. Maher T et al. BMC Pulm Med 2017;17:124; DOI 10.1186/s12916-017-0842-4; 8. Bonella F et al. Eur Respir J 2016;47:597–606; 9. Raghu G et al. Am J Respir Crit Care Med 2015;192:e3–e19; 10. Jo HE et al. Eur Respir J 2017;49:1601592.
 PC-CDE-100979 Date of preparation August 2018